

Fire Resistance Ratings - ANSI/UL 263

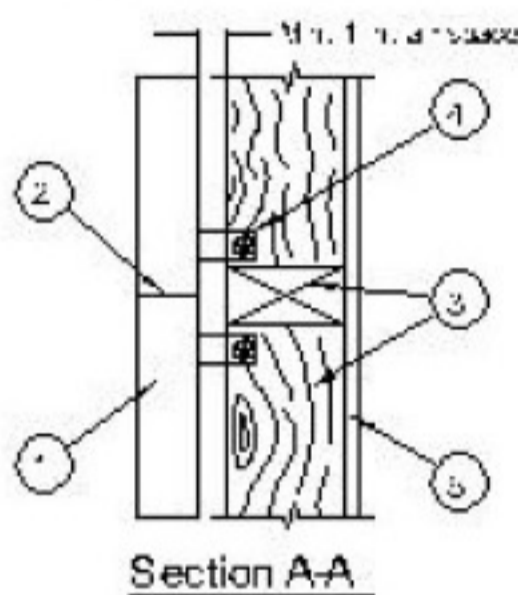
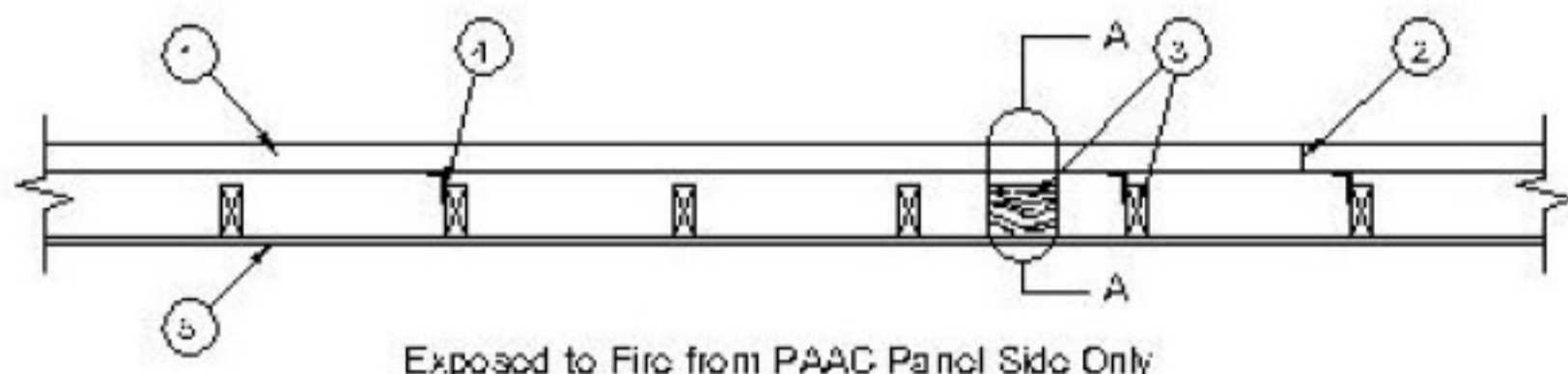
[See General Information for Fire Resistance Ratings - ANSI/UL 263](#)

Design No. U211

November 17, 2006

Wall Rating — 2 Hr

Finish Rating — 112 Min



SEPARATION WALL: — (Nonbearing)

1. **Precast Autoclaved Aerated Concrete Panels*** — 2 in. thick, max 24 in. wide and 8 ft or 10 ft long panels installed horizontally or vertically. Panels secured to studs with attachment clips (Item 4). Vertical and horizontal joints need not be backed by nor centered over studs. Butt joints staggered min. 16 in. from adjacent panels.

THERMACRETE L L C

2. **Fill, Void or Cavity Material*** — **Sealant** — Min. 1/2 in. thickness of fill material applied within the horizontal and vertical joints of the precast autoclaved aerated concrete panels. Where light shows through the tightly butted precast autoclaved aerated concrete panel joints, fill material shall be applied to the outer surface of such joints.

HILTI CONSTRUCTION CHEMICALS, DIV OF

HILTI INC — CP606 Sealant

PROTECTED WALL: — (Bearing or Nonbearing Wall)

3. **Wood Studs** — Nom 2 in. by 4 in., spaced a max of 16 in. OC, effectively firestopped. Studs effectively cross-braced. Min. 1 in. separation between wood framing and panels (Item 1).

4. **Attachment Clips** — Aluminum angles 0.046 in. to 0.060 in. thick and 2 in. wide with one 2 in. leg and one 2-1/2 in. leg. A 3/4 in. outside diameter, 3/8 in. inside diameter and 3/8 in. thick rubber grommet is pre-attached in the 2-1/2 in long leg of the angle. Clips positioned with 2 in. leg on panel side and 2-1/2 in. leg on stud side. Clips attached to studs (Item 3) with one 1-9/16 in. long, 0.10 in. shank diameter, 0.23 in. diameter head steel gas nail designated Type X-GN 39 MX manufactured by Hilti Inc. through a 1-3/8 in. diameter washer and the rubber grommet. Clips attached to panel (Item 1) with two of the same gas nails spaced 3/4 in. OC. Panel nails angled approximately 30 degrees from the horizontal. The gas nails for the stud side and panel side are applied using the Hilti Inc. GX-100 Gas-Powered Fastening Tool. When panels are installed vertically, clips spaced max 16 in. from horizontal joints and max 4 ft OC vertically per panel. When panels are installed horizontally, clips spaced max 16 in. from vertical joints and max 4 ft OC horizontally per panel. Minimum of three clips per 8 ft long side of panel. Minimum of three clips per 10 ft long side of panel.

5. **Gypsum Board** — Classified or Unclassified - One layer of min 1/2 in. thick by 48 in. wide boards installed horizontally or vertically to wood studs (Item 3). Gypsum board attached to wood studs using 1-5/8 in. wallboard screws spaced 8 in. OC along the edges and in the field.

6. **Finishing System** — (Not Shown) — Gypsum board joints and screw heads to be covered with paper tape and joint compound.

*Bearing the UL Classification Mark